



**I-Park's 2016 Fundraising Dinner**  
**CELEBRATING 15 YEARS OF NURTURING ARTISTS**

*from*  
**AROUND THE WORLD**

**Saturday, October 1, 2016**

**CELEBRATING 15 YEARS OF**

immense pride and gratification

feeling a part of something important

fostering a gnarly nest of creativity

shiny, happy people wanting to work,  
and be, here

artistic excellence

warm comradery and cultural exchange

artist-inspired programming

sharing the wonders of this special place with  
so many gifted artists

forward momentum

*I-Park*

428 Hopyard Road, East Haddam, CT  
860-873-2468 | [www.i-park.org](http://www.i-park.org)



## The Case for Giving

I-Park is an open-air and a closed-studio laboratory for artistic pursuits in the fields of music composition, visual art, architecture, moving image, creative writing and landscape design. The program was established in 2001 and stems from the dream of its founders to provide a retreat-type setting in which serious artists would be encouraged to explore their imaginations in a stress-free environment. The programmatic structures are intimate and supportive. The facilities are nestled into a 450-acre nature preserve with ponds, fields, teeming wetlands, miles of stone walls – and a pristine river runs through it.

Each artist is provided with a private studio and bedroom, a meal program and numerous shared amenities – all at no cost to them. OPEN Studios at the end of each session invites the public to enter the enclave, engage the artists in their workspaces and gain a better appreciation of the varied ways in which artists conceive and produce new works.

We focus on eliminating obstacles to the growth of each artist. An I-Park residency is a gift of time, an abundance of physical and intellectual space and precious fellowship. For almost 800 artists to date, I-Park has been an essential career stop along their creative journeys. We look to corporations, foundations and individuals who understand the cultural significance of this mission – and have the desire to help us sustain it.

## Event Sponsors

### Table Sponsors

Joseph Clark  
Helen C. Crispino  
Fiedler Marciano Architecture  
Scot Leavitt  
Mie Preckler (I-Park Fellows' Table)  
Santander Bank

### Food & Beverage Sponsors

Kristopher J. Bates  
Carabetta Construction Company  
Cherry Hill Construction, Inc.  
Winterberry Landscape & Garden Center

### Entertainment Sponsors

Curtin Construction  
Juliano & Marks, LLC  
Nemergut Consulting

## Major Supporters



Department of Economic and  
Community Development  
Office of the Arts



Winterberry  
Landscape & Garden Center  
Southington, Connecticut



### Dinner by



[www.ascotcatering.com](http://www.ascotcatering.com)

### Dessert by



[www.cakesbydonna.com](http://www.cakesbydonna.com)

### Entertainment



David Giardina Goza Latin Band  
[www.gozaband.com](http://www.gozaband.com)

Flamenco Dancers Margot & Rosanna

I- Park Composer-in-Residence Matthew Sheens (piano)

I- Park Composer-in-Residence William David Cooper (piano)

## Schedule of Events

### 5:00 to 6:00

Registration at the Welcome Tent

Reception by the Pond

Welcome by Joanne Paradis & Scot Leavitt

Music by I-Park Composers-in-Residence Matthew Sheens & William David Cooper

### 6:00 to 6:30

Return to Dinner Tent at the Main Campus

### 6:30

Dinner Tent Opens, Bar Opens

### 6:30 to 7:00

Presentation of New Studios Plans by Architect Mark Fiedler

15th Year Anniversary Toast by Ralph Crispino, Jr.

### 7:00 to 8:00

International Dinner Stations Open

Music by Dave Giardina Goza Latin Band

### 8:00

Silent Auction Closes

### 8:00 to 8:30

Flamenco Dancers Margot & Rosanna

The Case for Giving

### 8:30 to 9:30

Dancing & Dessert

Auction Check-out

### Looping videos in the dinner tent between 6:30 and 9:30:

New Studios Concept Drawings

15 Year Retrospective of Environmental Art at I-Park

## Event Organizers, Supporters' Credits

### I-Park Development Committee

Joanne Paradis & Scot Leavitt, *Co-chairs*

Liz Reynolds, *Development Associate*

Patsy Limón, *Finance Director*

Joan Hurwit

### I-Park's Volunteer Events Committee

Donna Everett

Linda Macary

Nancy Pinney

Beverly Floyd

Agnes Miyuki

Gayle Rossi

Karen Kratzer

Pinky Murphy

Patricia Shippee

### Table Hosts

Beverly Floyd

Patsy Limón

Patricia Shippee

Alva Greenberg

Pinky Murphy

### Gift Contributors to the Silent Auction

Bob Chaplin (I-Park Fellow), Prudence Sloan

David Madacsi (I-Park Fellow)

Michael Fairfax (I-Park Fellow)

Michelle Echenique (I-Park Fellow)

Marianne Barcellona (I-Park Fellow)

Peter Colquhoun (I-Park Fellow)

Scot & Ingrid Leavitt

Creative Cakes by Donna

Beverly Floyd

Claudia Cron

Karen Kratzer

Winterberry Landscape & Garden Center

Gelston House & Goodspeed Opera House

### In-Kind Contributions of Services

Ballek's Garden Center, plant materials on loan

Superior Rental, use of vehicles, forklift, scaffolding, light towers

Events by Superior, tents, tables, chairs, table settings

### Special thanks to those public officials who have been very supportive of I-Park:

State Representative Melissa Ziobron, Former East Haddam First Selectman Mark Walter and East Haddam Economic Development Commission Chairman Robert Casner.

## **I-Park's September Artists-in-Residence**

(in addition to their patience with all the commotion: assistance on Volunteers Day, decorating, performances at the Fundraising Dinner)

Thierry Godet	Benjamin Heller
Matthew Sheens	Saulius Dastikas
Aasa Ersmark	Laura Morrison
William David Cooper	

## **September Volunteers Day Participants**

Bob Chaplin	Alana May-Shinale
Steve Hitriz	Lynne Meyer
Bill Hitriz	Genevieve Rogers
Marta Violette Kot	Gerry Schmid
Anton Edward Kot	Samantha Strang

## **Eversource Volunteers Day at I-Park**

Ana Alfaro	Mike McDermott
Richard Anderson	Mike Morrissey
Patricia C. Bandzes	Lanny Nagler *
Ellie Breinan *	Mary Sikorski
Tiara Calovis	Jeremy Stalschesky
Tom Kapsprzak	Emily Steinmiller
Linda Macary	Hal Wood *
Lori Matthews	

\* Not an employee of Eversource

## **Professional Support**



dfx Entertainment, Booking of Entertainment, [www.dfxent.com](http://www.dfxent.com)

Agnes Miyuki, Graphic Design Services

Essex Printing, Printing Services

Hitriz Brothers, LLC

Curtin Construction

Moodus Electric

Sally Rothenhaus, Photography

# Site Installations You'll Be Viewing This Evening

(weather permitting)



*Loop*  
Stuart Ian Frost  
2015

Photograph by Stuart Ian Frost



*To A Constellation*  
Jennifer Newsom & Tom Carruthers  
2016

Photograph by Jennifer Newsom



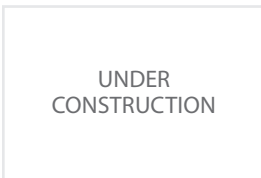
*Untitled*  
Barbara Holmes  
2016

Photograph by Ralph Crispino, Jr.



*Lautus Naturalis*  
François Fréchet  
2015

Photograph by Karin van der Molen & Patrick von Boeckel



*Be and Remember*  
Saulius Dastikas  
2016



*Various Ephemeral Works*  
Thierry Godet  
2016

Photograph by Thierry Godet



*Léve*  
Ciudad Abierta Collective  
2012



## 15 Points in I-Park History

1993	Eight Mile Gardens
1995	Negotiations
1998	Got It!
1999	The Pond Path
2000	Renovations
2001	The Personal Reference
2002	Mie's Trail
2003	First Open House
2007	First Environmental Art Biennale
2010	Thanatopolis Symposium & Exhibition
2012	Symposium on Ephemeral Art + Architecture
2014	Re-Grouping
2015	Town Approval
2015	Composers + Musicians Collaborative Residency
2016	Experimental Family Residency

## Board of Directors

Ralph Crispino, Jr., *President, Board Chairman*

Joanne Paradis, *Executive Director, Treasurer*

Mie Preckler

Joseph Clark

Joan Hurwit

Diane Wittry

Scot Leavitt

Mark Fiedler

Karen Harris

## Giving Options



I-Park offers artists a retreat-type residency experience during which they may explore their creative interests - a precious gift of time, space and fellowship. The (typical) 4-week residency is fully-funded and the artists are provided with a private bedroom, private studio, meal program, abundant staff and material/equipment support and extensive use of the I-Park grounds.

I-Park operates by virtue of the generous gifts, financial and in-kind, of supporters such as yourself – supplemented by some public grants. Over the past 15 years, I-Park has hosted almost 800 visual artists, composers, architects, writers and landscape/garden/ecological designers from around the world. Your contributions

this evening will help ensure our ability to sustain and enhance our residency, and related, programs – and continue to make a positive impact within the local community and the greater culture.

Thanks in advance for your support!



### 2017 Site Responsive Art Program: Residency & Biennale

Earlier this year, I-Park was awarded a \$20,000 grant from the National Endowment for the Arts in support of our 2017 Site-Responsive Art Program, the sixth in a series of exhibitions, going back to 2007, of multi-disciplinary artworks set in the I-Park landscape. While the NEA grant was a wonderful boost, the total cost of this program is almost \$90,000. Your support will help us to keep this signature program alive and growing.



### Composers + Musicians Collaborative Residency

This program brings together 5 composers and a 6-person new-music ensemble, *ensemble mise-en* from New York, for an intensive 2-week session of joint workshops and rehearsals. The 5 new works emerging from this cauldron will be greatly enhanced through the power of collaboration and an extraordinary commitment of rehearsal time that is so essential in the field of new-music. Two concerts will emerge from this residency.

\$25 Quarter Note

\$100 Whole Note

\$500 Concerto

\$50 Half Note

\$250 Jazz Riff

\$1,000 Oratorio

All contributors will be recognized on the I-Park website and acknowledged in the printed programs for both concerts.



## Experimental Family Residency

This special program was designed to help meet the pressing need of artists with children to keep their practices fresh by offering them the gift of focused time, lots of creative space and stimulating fellowship – opportunities afforded by the I-Park artists-in-residence experience. Most residency programs are unable to accommodate families. The goal of this experimental program is to help unlock this stifled creative potential.

\$25 Friend of the Family

\$100 Uncle/Aunt

\$500 Parent

\$50 Cousin

\$250 Sibling

\$1,000 Patriarch

All contributions will be recognized on the I-Park website and acknowledged in the printed OPEN Studios program.



## Matching Funds for I-Park's State of Connecticut Good-to-Great Grant

In late 2015, I-Park was awarded a grant of \$110,000 by the State of Connecticut for some important facilities projects: an ADA compliant trail through the park, 3 new ADA ramps, an expansion of our social/meeting space and architectural design services for a new composers/sound studio. The grant requires 25% in matching funds. We need to raise \$27,500 from the public in order to bring these worthwhile projects to fruition.



## Other Ways You Can Support the I-Park Foundation

**General Operating Funds.** These critical funds are used to pay for staff salaries, artists' support (including the artists' meal program), utilities, facilities upgrades and maintenance, honoraria for selection panelists and such.

**Major Donors,** those giving at the \$2,500 and above level, will be acknowledged on the homepage of the I-Park website for at least a full calendar year.

**Customized Sponsorships** are also available – contact Liz Reynolds, Development Associate, at [liz@i-park.org](mailto:liz@i-park.org) for additional information.

Finally, **In-Kind Contributions** are a high-value (hopefully, low pain) way to support the good work of the I-Park Foundation. From everyday items to major amenities, these, generally tax-deductible, gifts allow us to leverage our limited financial resources while you get the satisfaction of helping us to fulfill important needs of the organization. See our separate In-Kind Gifts brochure for a listing of our current needs.

## Silent Auction Items

### A Weekend at I-Park

**estimated value:** \$2,500    **starting bid:** \$1,200

[www.i-park.org](http://www.i-park.org)



Get away from it all by staying for three (3) days and two (2) nights at I-Park! During your weekend getaway, you will have full use of the main campus, which includes the 6 bedrooms, 4 bathrooms and 6 artists' studios.



Available weekends: November 23-25, 2016, December 2-4, 2016, April 7-9, 2017 and

August 25-27, 2017. Additional dates, from January through March 2017, may be possible. A short statement of use will be need to be submitted for approval. The winning bidder will be responsible for any damages incurred during the weekend, beyond normal wear and tear. The property is not to be used for commercial purposes. Maximum: 12 individuals. No pets.

ITEM #101

### \$1,000 Gift Card to Winterberry Gardens

**estimated value:** \$1,000    **starting bid:** \$500

[www.winterberrygarden.com](http://www.winterberrygarden.com)



With 16 acres filled with everything from unusual specimens to hardy native plants and the help of **Winterberry's** landscape professionals, you're sure to find the perfect flora or fauna to help you spruce up your gardens, add to the

landscape of your dreams, or find the perfect gift(s)! **Winterberry Landscape and Garden Center** is located at 2070 West Street, Southington, CT.

ITEM #130

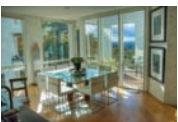
### Food and Wine Pairing Dinner for Six

**estimated value:** \$1,500    **starting bid:** \$700

[www.prudencesloane.com](http://www.prudencesloane.com) | [www.bobchaplin.com](http://www.bobchaplin.com)



Enjoy a delicious dinner for six at the home of TV chef, culinary educator, food journalist and public speaker **Prudence Sloane** and I-Park Fellow, internationally-known Landscape and Garden Artist and author of numerous vinous articles **Bob Chaplin** in Avon, CT. Together they write about and teach food and wine pairings. The dinner will consist of four courses paired with the perfect wines.



Dietary considerations and food allergies can be accommodated.

ITEM #110

## Buttercream Frosted, 3-Tier Wedding Cake

estimated value: \$375 starting bid: \$150

[www.cakesbydonna.com](http://www.cakesbydonna.com)



Customize your own 3-tier wedding cake with light buttercream frosting for up to 75 people made by **Creative Cakes by Donna**. Donna takes pride in producing uniquely elegant, moist and delicious cakes for brides

from all over Connecticut and parts of Rhode Island, Massachusetts and New York. Her designs are innovative, creative and stylish. Whether you are a bride who is very trend conscious, contemporary or classic, **Creative Cakes** will construct a masterpiece just for you. Delivery not included.

ITEM #113

## Dinner and a Show for Two

estimated value: \$258 starting bid: \$130

[www.gelstonhouse.com](http://www.gelstonhouse.com) | [www.goodspeed.org](http://www.goodspeed.org)



Enjoy an evening of dining and entertainment with a \$100 gift certificate to the **Gelston House**, an American fine dining restaurant in a vintage B&B home overlooking the Connecticut River followed by a short stroll to view a performance of *Chasing Rainbows*, inspired by the *Wizard of Oz*, at the historic **Goodspeed Opera House**.

The **Gelston House** is located at 8 Main Street, East Haddam, CT and The **Goodspeed Opera House** is located at 6 Main Street, East Haddam, CT. The musical will be running until November 27, 2016.

ITEM #125

## One-of-a-Kind "Junk Trail" Necklace

estimated value: Priceless starting bid: \$200

[www.michelleechechique.com](http://www.michelleechechique.com)



Taken from the scraps of I-Park's *Junk Trail*, this one-of-a-kind necklace was designed and created by I-Park Fellow **Michelle Echechique**. A mixed-media artist living and working in San Francisco, CA, Michelle is known for her use of found and cast-off materials in her 2- and 3-dimensional work. Making use of reclaimed materials' innate histories, she works to create something wholly new that hints at the familiar. The richly layered, textured results exude both joy and mystery inviting scrutiny.

ITEM #120

**Marianne Barcellona, "Road to Jokulsarlon", 2014,  
Digital Inkjet Print on Archival Paper, 11" x 14" (unframed)**

**estimated value: \$350 starting bid: \$175**

[www.mariannebarcellona.com](http://www.mariannebarcellona.com)



Enjoy this signed Artist's Proof by New York-based photographer **Marianne Barcellona**. Marianne has been creating memorable images for major national and international publications. Her specialties are meeting the challenge of diverse and often unpredictable situations, and helping people to feel comfortable being photographed. Marianne has been awarded numerous fellowships and her work has been featured in numerous exhibitions. She is an active member of The New York Artists Circle and Hullabaloo Collective.

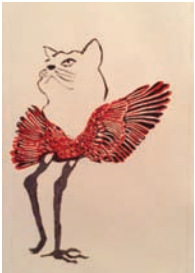
ITEM #127

---

**Beverly Floyd, "Catbird", Collograph/Linocut, 16" x 20"**

**estimated value: \$700 starting bid: \$250**

[www.beverlyfloyd.com](http://www.beverlyfloyd.com)



For **Beverly Floyd**, abstraction and nature are used as a means of expressing her subjects; however, the work is always about exploration and discovery. A graduate of the University of Massachusetts Amherst and Yale University School of Art, she has taught, exhibited and lectured in museums, universities and galleries in the U.S. and abroad. Her work is included in corporate and private collections including McKinsey & Company and Pfizer. She has earned many awards, scholarships and publications.

An opening reception for her next exhibition will be held at the Stone Gallery, 1 Maple Street, Chester, CT on Friday, October 7 from 6 to 8 p.m. The exhibition will run throughout the month of October 2016.

ITEM #121

---

**Peter Colquhoun, "I-Park Path", Oil on Linen, 19" x 9"**

**estimated value: \$800 starting bid: \$300**

[www.petercolquhoun.com](http://www.petercolquhoun.com)



New York City-based painter and I-Park Fellow **Peter Colquhoun** studied with Francis Cunningham and Lennart Anderson, among others. During the 1980s, Peter resided in Venice, Milan and Casole d'Elsa, a small village in Tuscany and currently makes frequent painting trips to France. His work has been exhibited throughout the U.S. and Europe and he has been the recipient of numerous awards including the Pollock-Krasner and Adolph and Esther Gottlieb Grants.

ITEM #124

## 6 Bottles of Rare-Aged Red Wines from Bob Chaplin's Cellar

**estimated value:** \$400    **starting bid:** \$200



Add these special bottles of wine to your collection or drink them now!:

1998 Pio Cesare Barolo

1997 Di Fanti Flavio, La Palazzetta, Brunello di Montalcino

1998 Henri Perrot-Minot, Chambolle-Musigny, La Combe D'Orveau Premier Cru

1999 Nicholas Potel, Savigny-les-Beaune, Clos des Guettes Premier Cru

2000 Chateau Cote de Baleau, Saint-Emilion Grand Cru, Bordeaux

1995 Chateau Meyney, Cru Bourgeois, Saint-Estephe, Bordeaux

ITEM #111

## Claudia Cron, "Again", Digital Print on Aluminum, 8" x 10"

**estimated value:** \$100    **starting bid:** \$50

[www.claudiacron.com](http://www.claudiacron.com)



**Claudia Cron's** unframed print, *Again*, features the pond at I-Park during the autumn season. Claudia, who favors muted, minimal color tonalities, has noted her "visual allergy" to groupings of strong primary colors. Her work has been exhibited throughout the East Coast as well as in Alabama, Texas, Illinois and Kansas.

ITEM #123

## Karen Kratzer, "Weeping Woman", Acrylic on Canvas, 8" x 10"

**estimated value:** \$200    **starting bid:** \$80



A graduate of the Newark School of Fine & Industrial Arts, **Karen Kratzer** also studied art at The Brooklyn Museum Art School, NY School of Visual Arts & University of Minnesota. Karen was a graphic artist, cartoonist and illustrator for the *NBC Nightly News*, *The Today Show* and *Saturday Night Live*, an art director at Wesleyan University and has produced story boards and artworks for RMProductions/Media Ventures, a Movie Production Studio in Minneapolis, MN.

ITEM #122

## 2000 Estancia Meritage (3.0 L Bottle)

**estimated value:** \$99.96    **starting bid:** \$50



**Estancia Meritage** is a sophisticated, rich, complex and luscious wine harvested from the Alexander Valley in Sonoma County, CA. The vintage is a mix of cool and warm spells. According to the *Wine Spectator*, "Plenty of cream, mocha and vanilla-scented oak up front in this smooth wine, with mocha, currant and spicy coffee scents. Impressive for its elegance and silky mouthfeel."

Donated by Scot and Ingrid Leavitt.

ITEM #112

## David Madacsi, "Below the Pond – New Year's Eve", Archival High Resolution Photograph, 32" x 48"

**estimated value:** \$1,000    **starting bid:** \$400

[www.davidmadacsi.com](http://www.davidmadacsi.com)



**David Madacsi**, an I-Park Fellow, creates site-specific installations, photography, and found object assemblage. A native of Youngstown, Ohio, and long-time resident of Mystic, CT, David came to art via an academic career in the discipline of physics. His professional career as a physicist was focused on light and included the study of materials and processes for photoelectrochemical conversion and storage of solar energy. David currently pursues art — and related writing — full-time, drawing on his insight into the workings of the physical world to inform his creative work.

ITEM #126

---

## Funeral Bird Sound Home, 8' H x 1' W

**estimated value:** \$2,000    **starting bid:** \$800

[www.michaelfairfax.co.uk](http://www.michaelfairfax.co.uk)



Constructed of cedar, oak, piano wires, piano turning pegs and aluminum, this beautiful work was created by I-Park Fellow **Michael Fairfax**.

Michael, a Public Artist, Sculptor and Designer, works with the site, the materials surrounding him to create a visual coherence with the environment. He has worked throughout the British Isles for numerous arts organizations, county councils, borough councils and district councils during the last 25 years. He currently resides in Somerset, England and enjoys a 10-acre woodland area where he seeks "solace amongst the great oaks, the red soil and the pudding stone whilst the buzzards and ravens wheel above me."

ITEM #132

---

## Socrates Sculpture Park Book

**estimated value:** \$60    **starting bid:** \$30



**Socrates Sculpture Park** is one of the most acclaimed public art spaces in the country. The Park opened in 1986 and has been an outdoor studio to over 500 artists, a venue presenting more than 40 exhibitions of large-scale sculpture, and a vital park attracting a diverse audience to Long Island City's East River waterfront. This handsome book celebrates the 20th anniversary of **Socrates Sculpture Park** and reflects the history, spirit, and nature of

this collaborative enterprise through photographs and essays that reveal the beauty, energy, and import of this successful public art space.

Donated by Scot and Ingrid Leavitt.

ITEM #131



# Auction Rules

## Registration

Upon entering the event, you will receive or confirm your bid number. Please use only the bid number assigned to you for bidding on silent auction items.

## Silent Auction

Silent Auction opens per the published Schedule of Events. The minimum bid for each item is written on the bid sheet by the item. To be valid, bids must comply with these minimums and be legible. To place a bid, write your bid number next to the bid amount on the bid sheet. Doing so constitutes a legal contract to purchase that silent auction item at the price you stated, if yours is the winning bid. The last (highest) valid bid entered at the moment the auction closes will be the winning bid. If you are the winning bidder, the Item is yours and will be available for pick up or delivery (see Delivery) once it is paid for and packaged.

The Auction Committee reserves the right to withdraw any item at any time without notice before the actual sale. In the event of a dispute, the Auction Committee shall act as final authority in determining the winning bid.

## Payment, Pickup

All items must be paid for by the end of the evening. We gladly accept cash, check, MasterCard, Amex and Visa. Once you have paid for your winning items, you will be issued a receipt. Please present this receipt at Pick-Up to claim your winning tangible items and/or certificates for services. It is the responsibility of the purchaser to remove his/her winning item(s) by the end of the auction, unless prior arrangements are made for delivery (see Delivery).

## Terms of Sale

Unless otherwise noted, all certificates for goods and services must be used within one year of the auction date.

All sales are final. There will be no exchanges or refunds. I-Park Foundation, Inc. (I-Park) does not make any expressed or implied warranties or guarantees on auction items regarding quality or value of items or services. I-Park attempted to describe and catalog all items correctly, but all items are offered and sold "AS IS" and "WITH ALL FAULTS." I-Park neither warrants nor represents, and in no event shall be responsible for the correctness of descriptions, genuineness, authorship, provenance or condition of the items. No statement made in this catalog or made orally at the auction or elsewhere shall be deemed such a warranty for tax purposes or market value. Items have not been appraised unless otherwise noted.

Reservations for accommodations must be mutually arranged to with the donor unless otherwise noted. No refunds will be allowed.

By the buyer's purchase, the buyer waives any claim for liability against I-Park, its elected and appointed officials, members and employees, sponsors, volunteers connected with the auction and/or the donor of the item. Neither I-Park nor the donor is responsible for any personal injuries or damage that may result from the use of the property or services.

## Tax Information

This catalog lists the fair market value of each item. Any amount you pay in excess of the fair market value would normally be available to you as a charitable contribution for tax purposes. Please check with your tax advisor for specifics. We will mail you a letter for your records.

## Delivery

We include free delivery within a twenty mile radius for any large or fragile items purchased on Saturday night. Simply ask about delivery at check-out and a staff or volunteer will make an appointment with you in the days immediately following the event.



## General Event Information

### Walking the Trails

Be very careful when walking to the Pond. Although we have made significant trail safety improvements in preparation for this event, you may still encounter some loose stones, walkway depressions or exposed roots along the way. So while we want you to thoroughly enjoy the visual stimulation surrounding you, please keep at least one eye on the road/trail below. It's recommended that you wear comfortable walking shoes. The walk to the Pond should take about 10 minutes.

### Ticks

The land, typical of the region, is home to ticks, some of which carry Lyme and other diseases. You are welcome to spray yourself with our Deep Woods Off before heading out for the walk. You should check yourself when you return home for any evidence of a tick bite. If you have been bitten, watch for the typical symptoms and, should they develop, get yourself to a doctor for a Lyme disease test. Of course in many cases, symptoms can develop without signs of a bite. Please take care. Note that most tick bites are not, in fact, infectious.

### Toilets

There are two toilets in the Common Area and a portable toilet out on the land by the Pond Studio.

### Parking

Parking is available in the open fields to the north of the main campus. Follow the signs upon arrival.

### No Pets

Please do not bring your pet to I-Park. It's not that kind of park. For several reasons, we do not allow pets on the land.

